

Premium flat 167 Twinson (P 9576)

(formerly O-Wall)

Examples

deceuninck

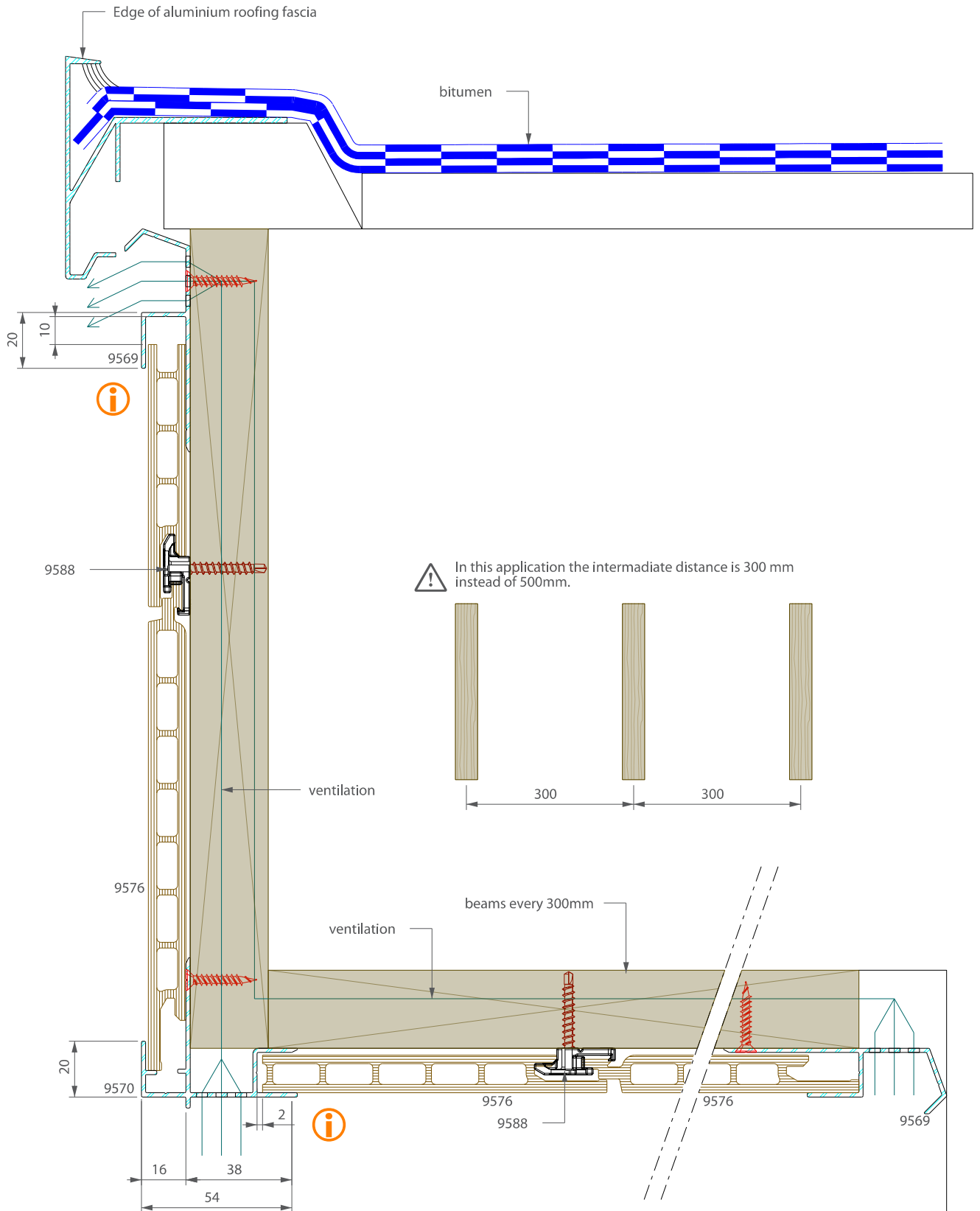
4.1 Soffits

4.2 Spotlights

4.3 Rainwater drainage

4.4 Aluminium finishing

4.1 Soffits

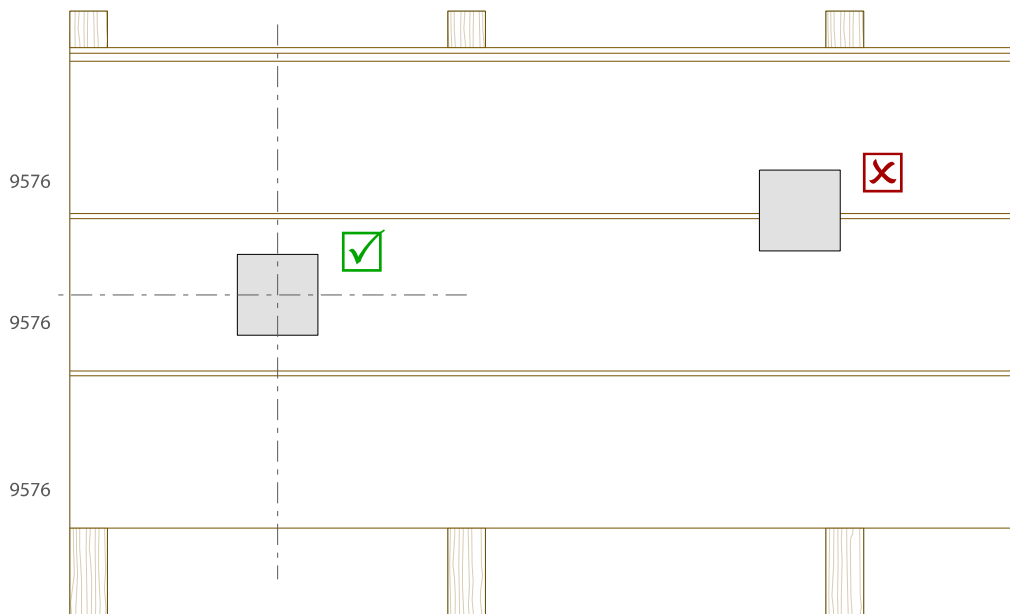


(i) Pieces of the P9471 can be used to maintain some positioning of the profile.

4.2 Spotlights

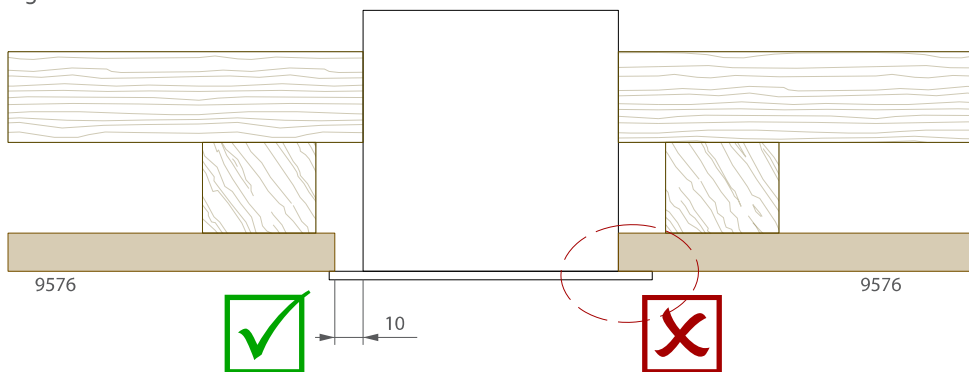
4.2.1 Light weight decking spotlights:

- Light weight Decking lights must to be installed between the batten supports and centrally in the middle of one plank. Installing lights that overlap different planks could lead to extra tension due to expansion which in turn may lead to deformation of the planks and/or damage to the lights.
- Positioning the decking lights in the middle of the planks between the battens is the best method of avoiding blocking the expansion.
- The temperature of the casing of the decking light should not exceed 60°C, please refer to the manufacturer for guidance.



4.2.2 Heavy weight decking spotlights:

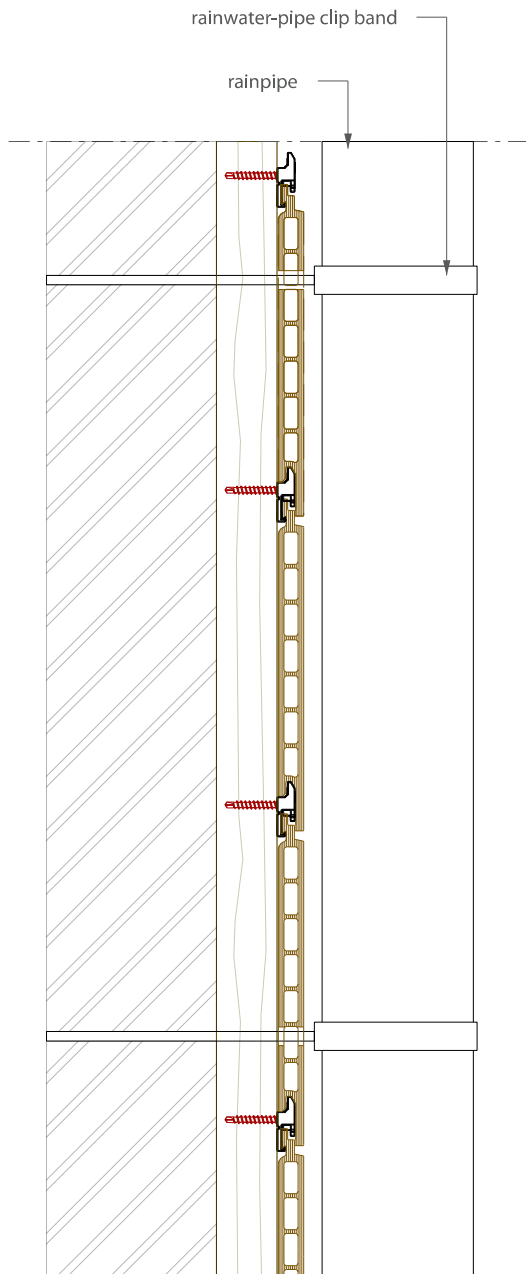
- Heavy decking lights should be fixed directly to a sufficient, reinforced under structure. In this case the spot needs to be considered as a fixed object so an expansion space of 10mm around the light is needed.
- Additional battens will be needed next to the light to fix the plank with the clip P9588 as close as possible.
- The temperature of the casing of the decking light should not exceed 60°C. Please refer to the manufacturer for guidance.



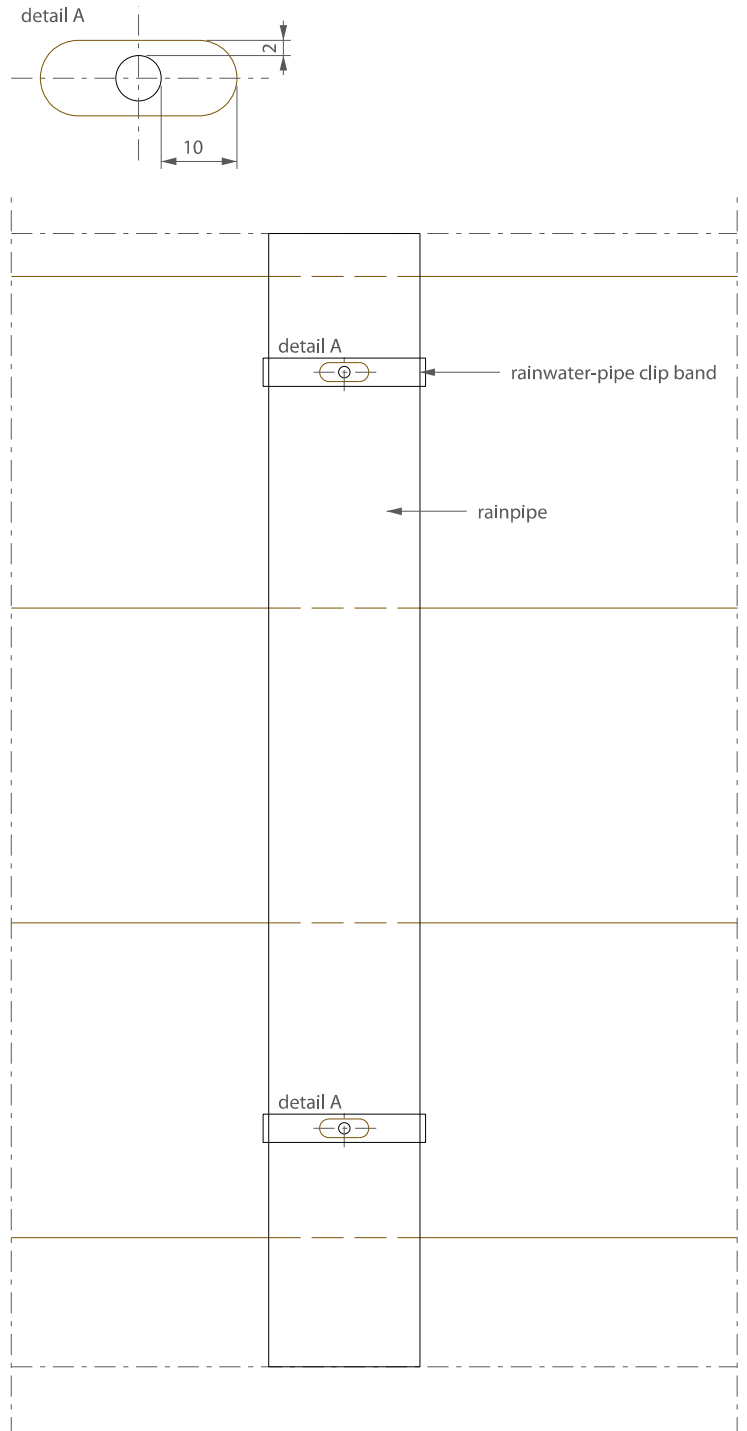
4.3 Rainwater drainage:

4.3.1 Horizontal installation:

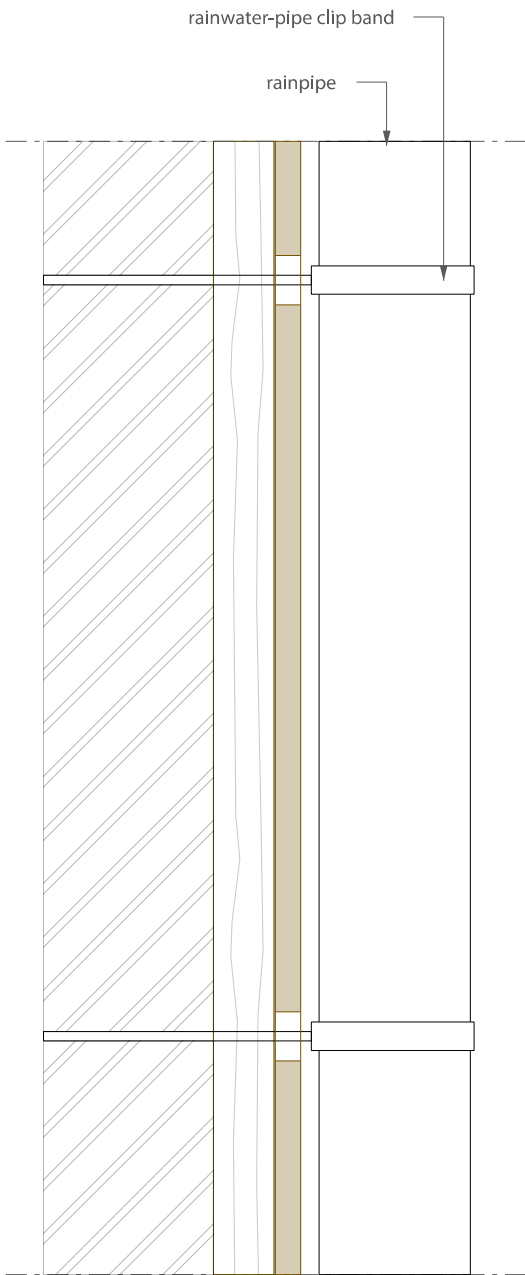
Side view:



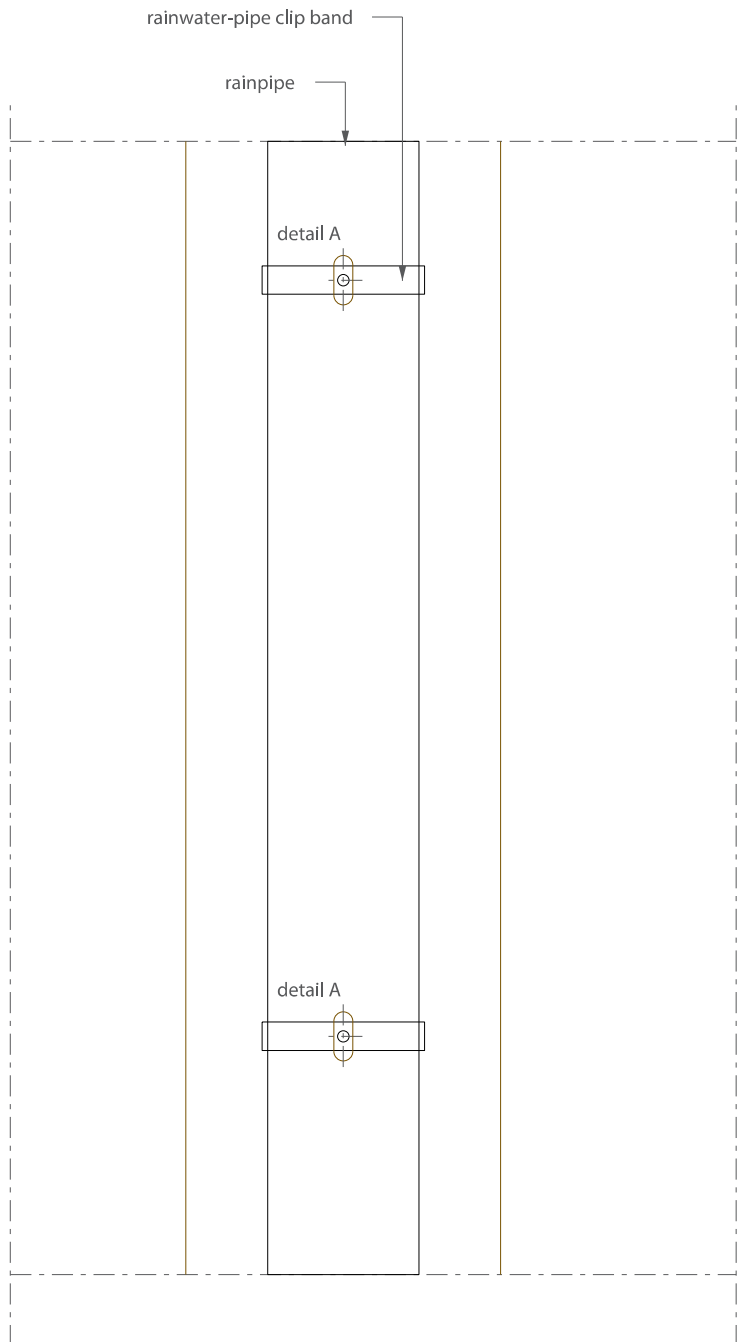
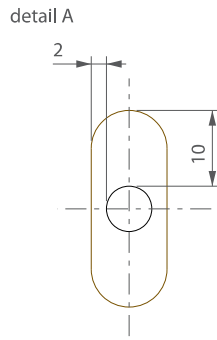
Front view:



4.3.2 Vertical installation:
Side view:



Front view:



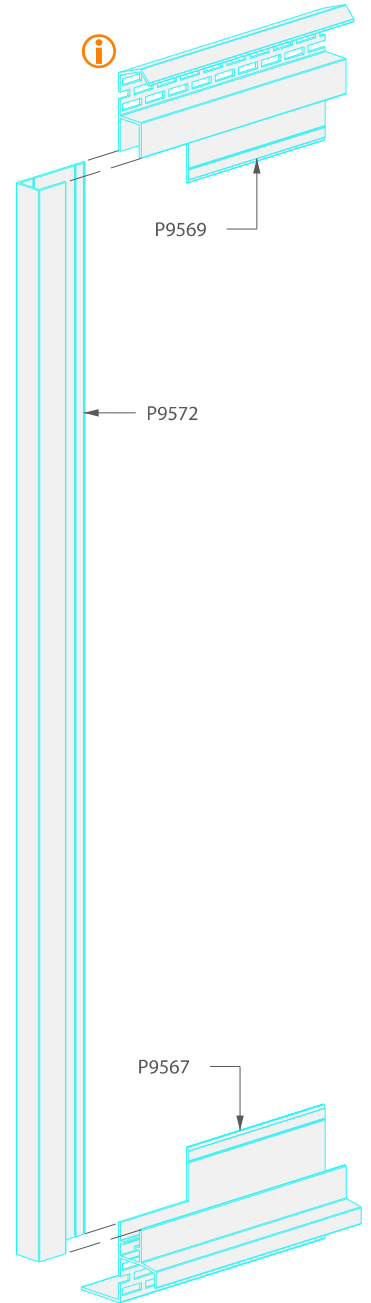
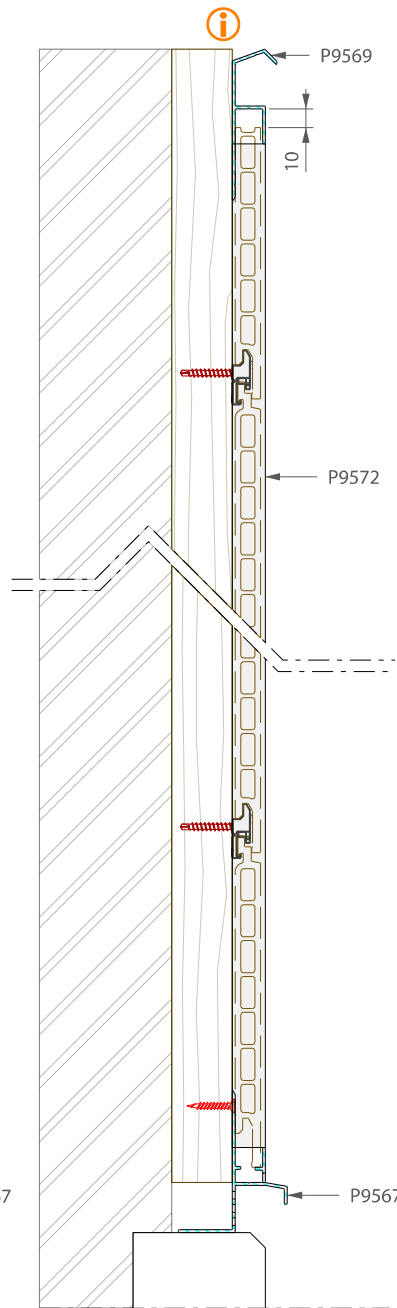
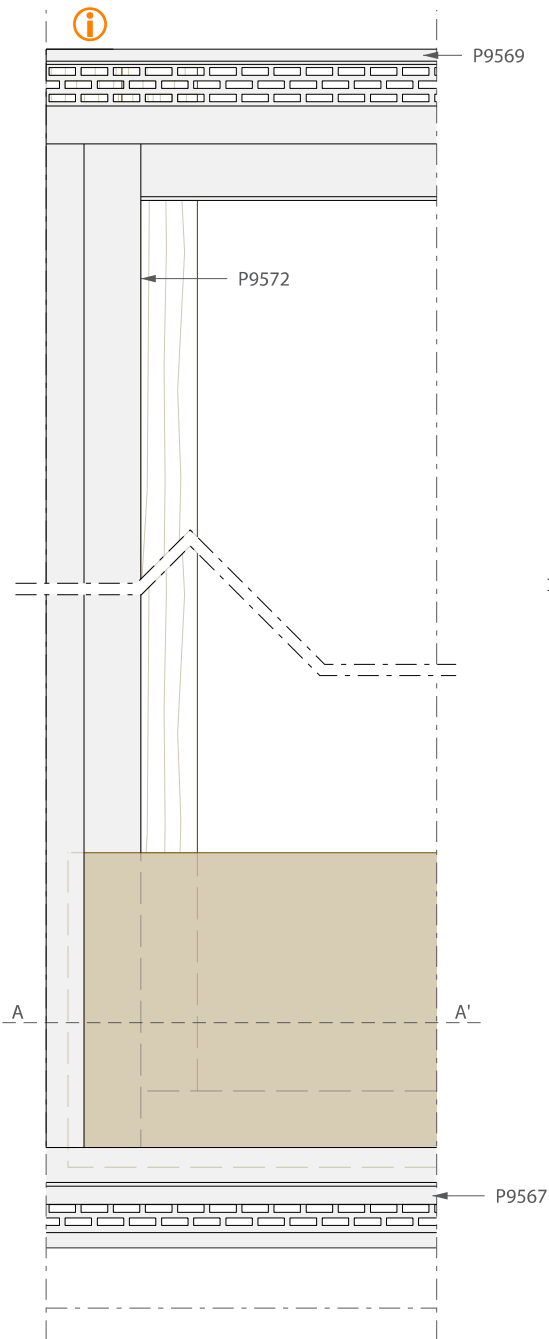
4.4 Aluminium finishing:

4.4.1 Horizontal installation:

A Sides with P9572 (alternative for P9562):

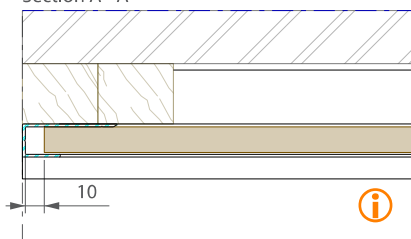
Front view:

Side view:



Top view:

Section A - A'

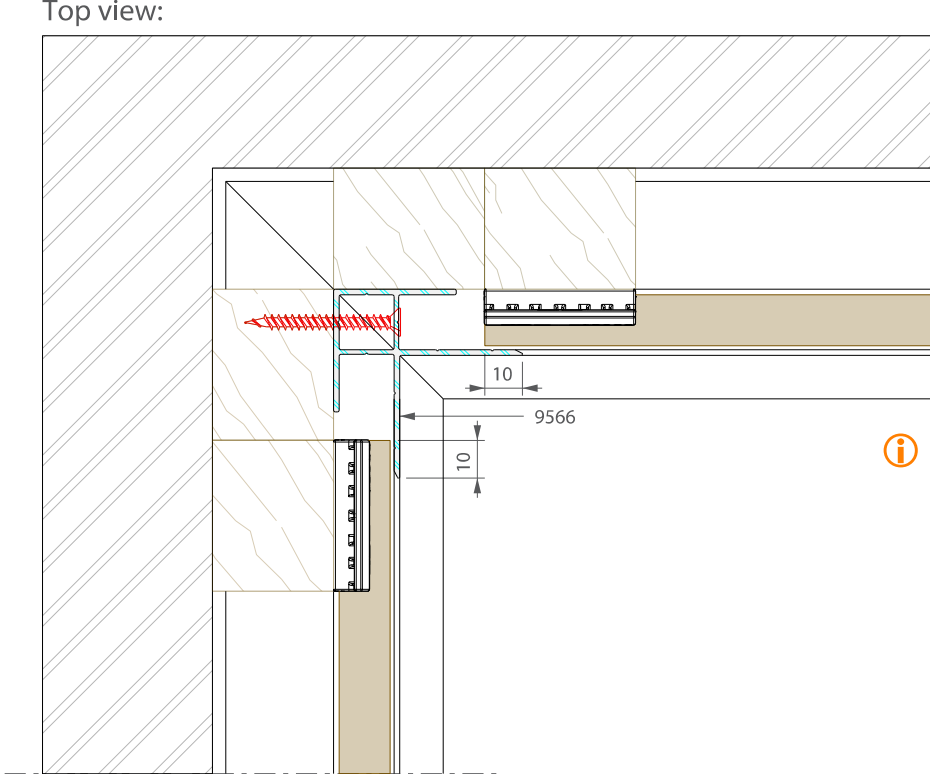


 Pre-drill all aluminium finishing profiles.

4.4.1 Horizontal installation:

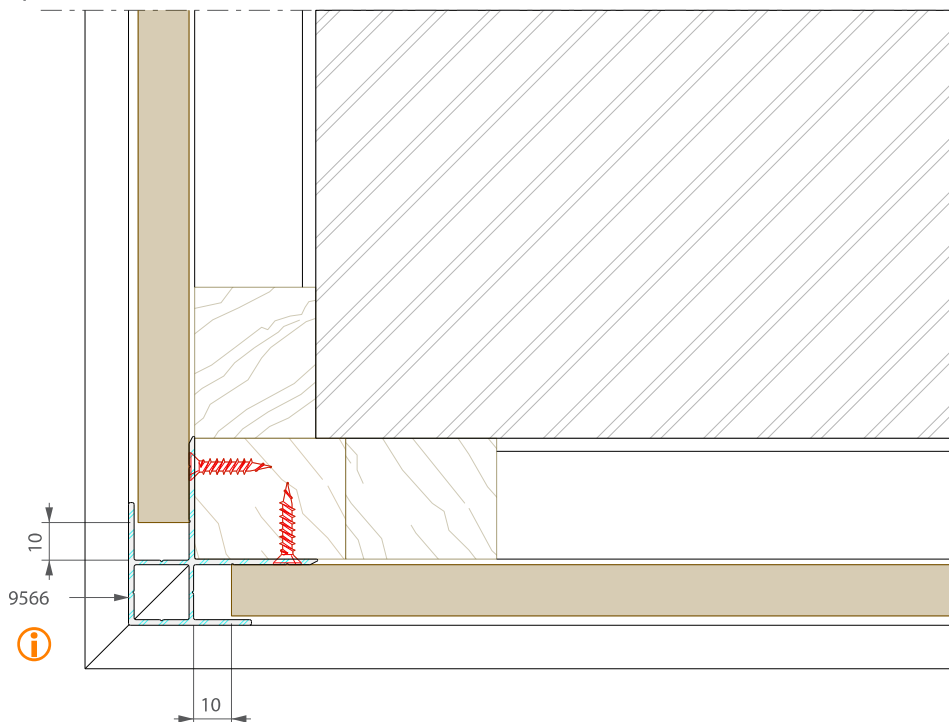
B Internal corner P9566 (alternative for P9562):

Top view:



C External corner P9566 (alternative for P9564):

Top view:



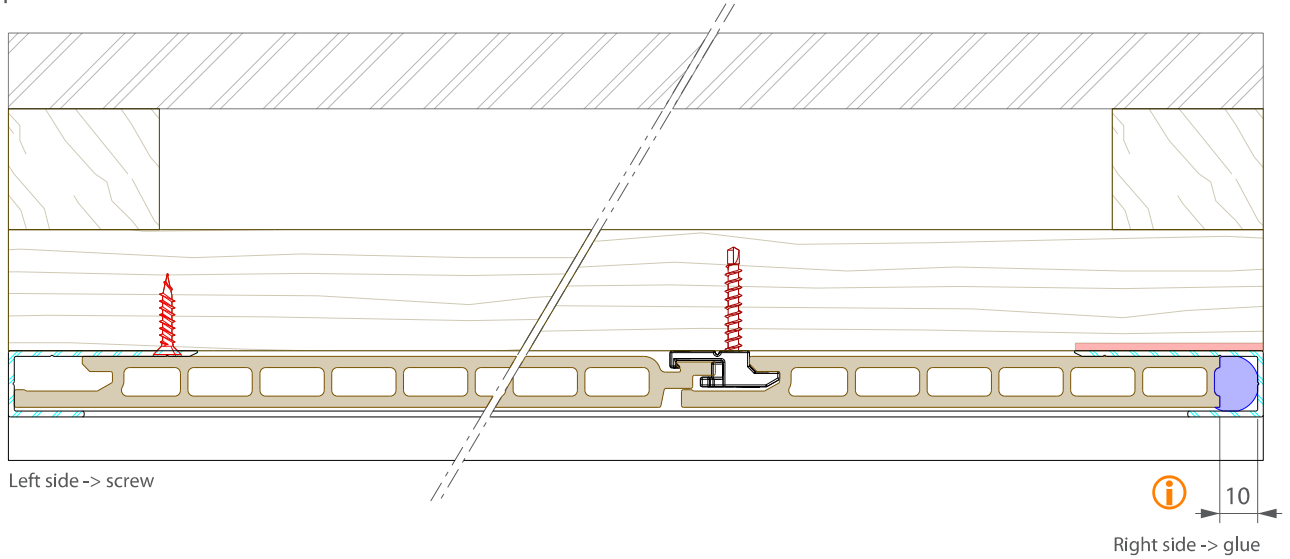
 Pre-drill all aluminium finishing profiles.

4.4 Aluminium finishing:

4.4.2 Vertical installation:

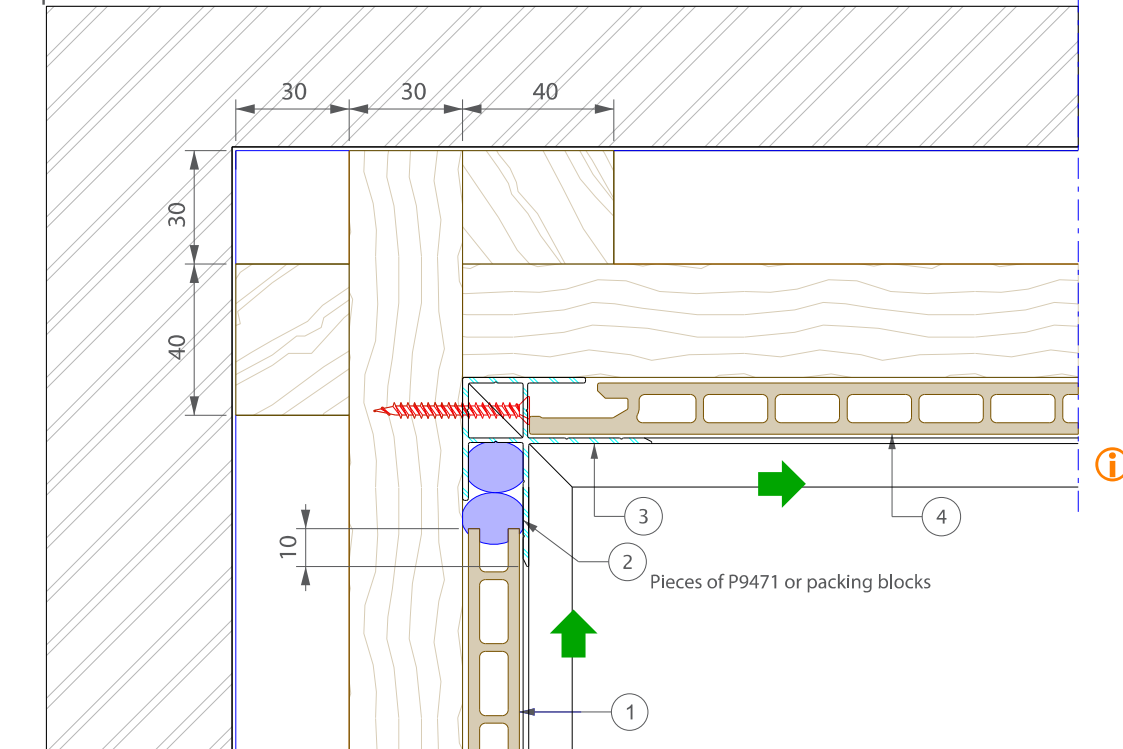
A Sides with P9572 (alternative for P9562):

Top view:



B Internal corner P9566 (alternative for P9562):

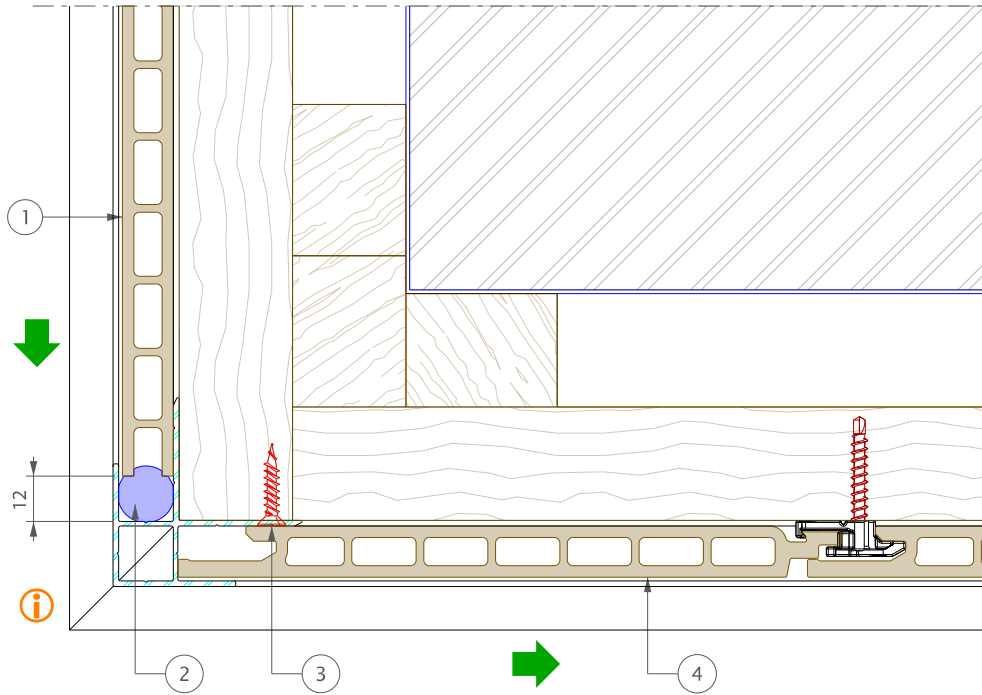
Top view:



4.4.2 Vertical installation:

C External corner P9566 (alternative for P9564):

Top view:



 Direction of installation.

 Pre-drill all aluminium finishing profiles.